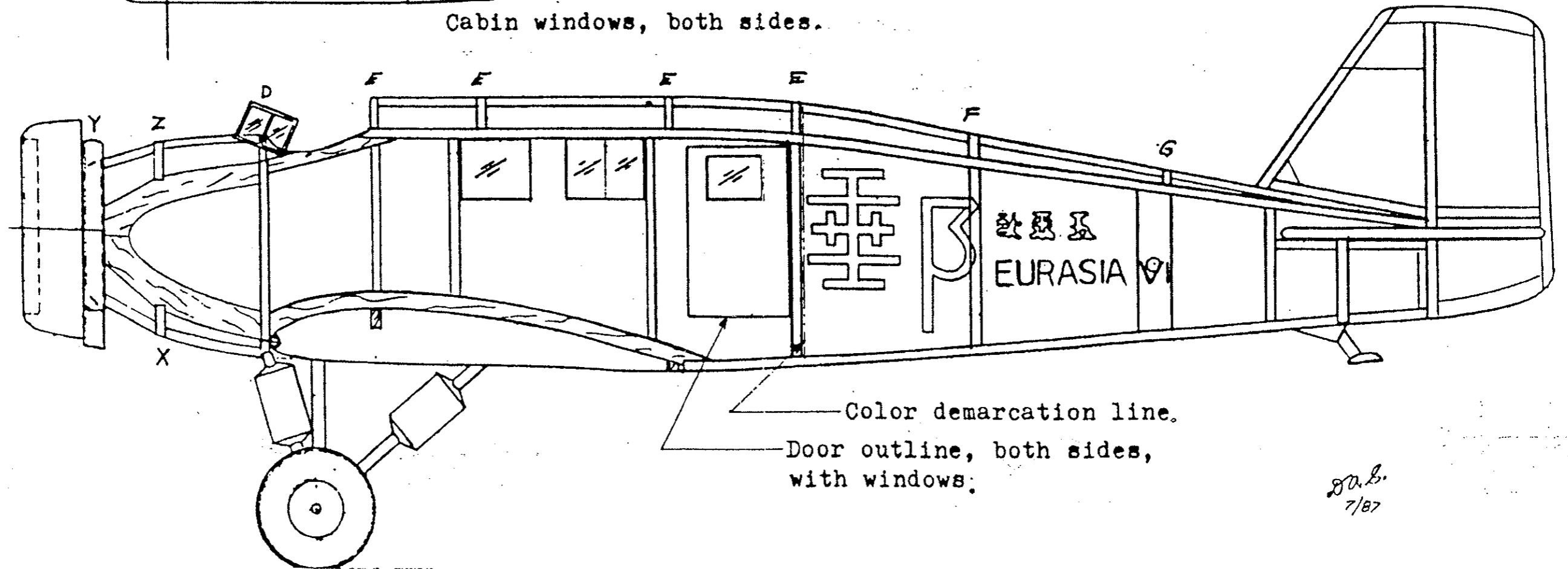
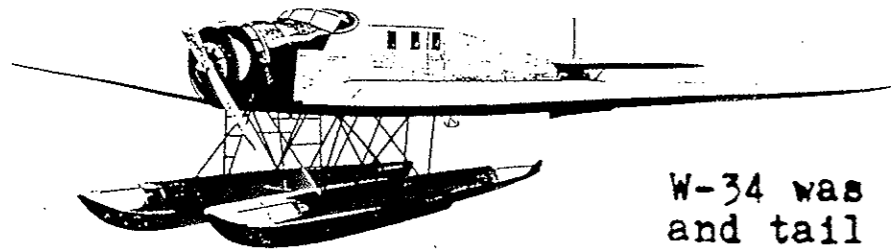


Cabin windows, both sides.

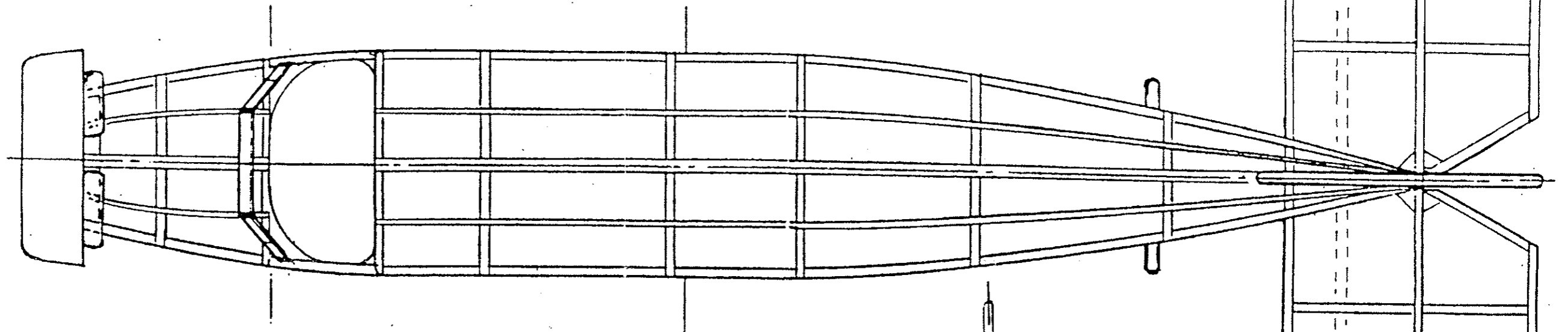


Color demarcation line.
Door outline, both sides,
with windows.

S.A.L.
7/87



W-34 was colored all silver with black landing gear struts and tail skid. The hub of the balloon wheel was silver. Markings as shown on the fuselage and wing were black. The characters on the wing were repeated four times, that is they appeared as shown on the top and bottom of both left and right wing outer panels.



Junkers W-34

