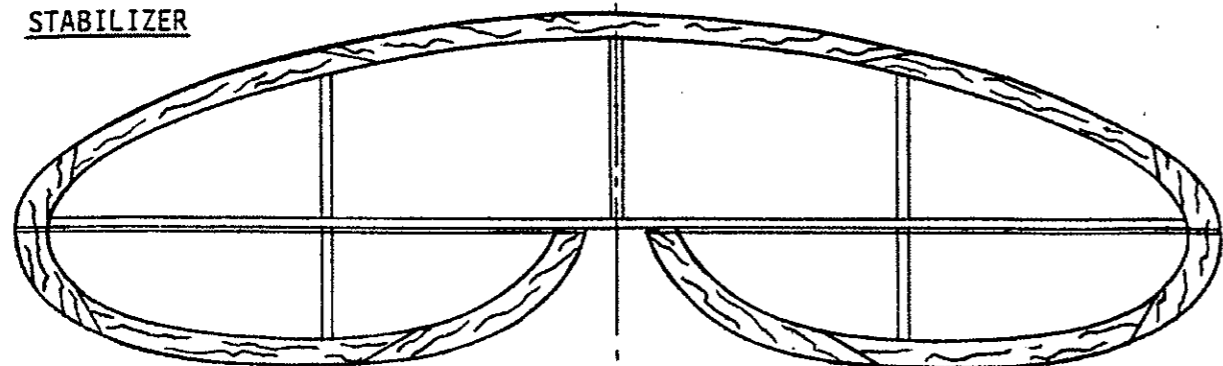
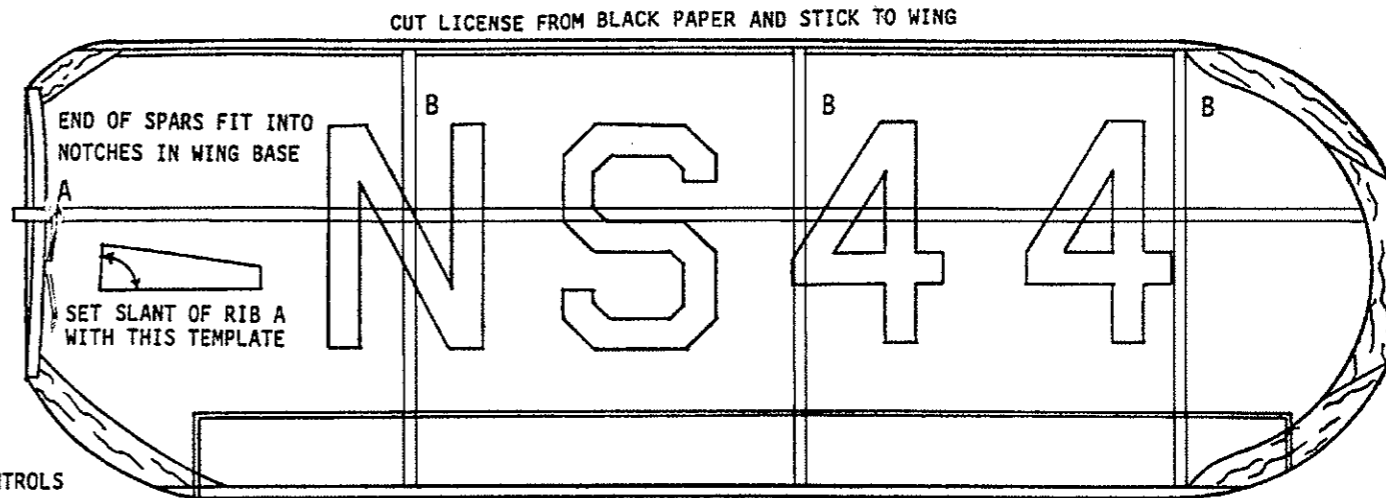


STABILIZER



ALL Balsa IS 1/16 SQUARE & 1/16 SHEET EXCEPT AS NOTED

WING
MAKE LEFT AND RIGHT



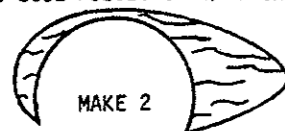
OUTLINE ALL CONTROLS WITH BLACK PAPER STRIPS



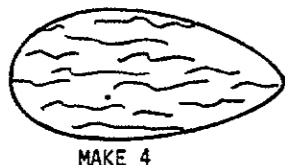
COVER SKYLIGHT WITH CELLULOID



WHEEL PANTS
MAKE ONE CORE PIECE AND TWO SIDE PIECES OF 1/16 SHEET



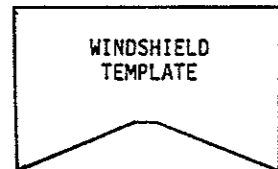
WHEEL
MAKE FROM 1/16 SHEET



REAR WINDOW FRAME

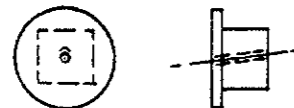


WINDSHIELD TEMPLATE

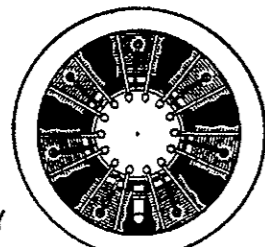


NOSE PLUG DETAIL

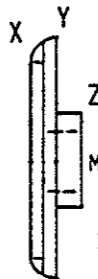
DRILL AT ANGLE FOR DOWNTHRUST



CUT OUT LARGE HOLE IN X

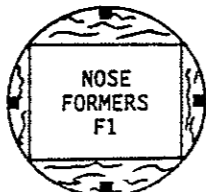


CUT OUT DUMMY MOTOR & STICK TO FRONT OF Y

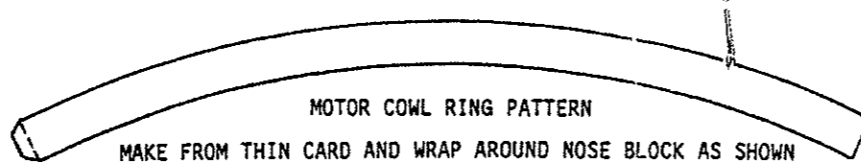
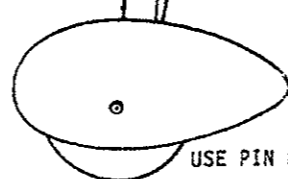


MAKE Z FROM 1/8 SHEET TO FIT INSIDE NOSE

CUT SQUARE HOLE IN Y AND Z



STRUT BRACE e

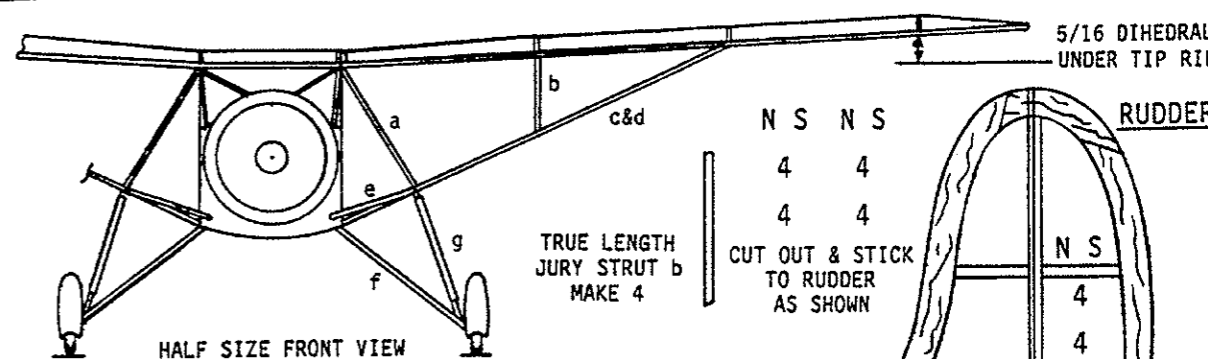
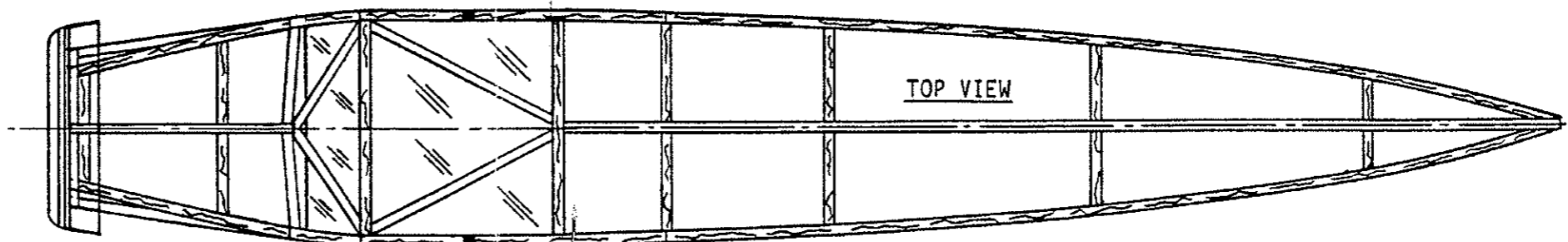


WING BASE

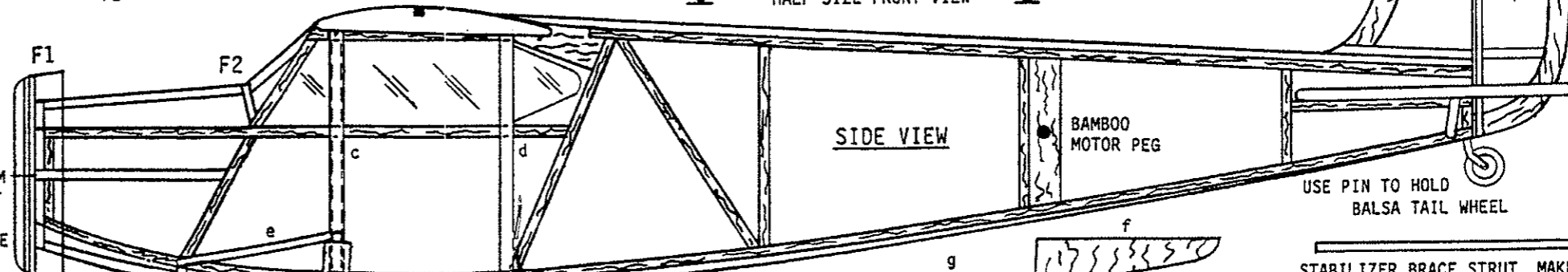
USE PIN HOLES TO LOCATE WING ON ASSEMBLY



TOP VIEW



SIDE VIEW



TRUE LENGTH STRUTS g & f

SHOCK ABSORBERS WRAP AROUND STRUT g

Fairchild Cabin Plane
Type 24-C8A
Wingspan: 16 inches
Drawn By Dave Stott
Test Pilot O.K. Sharman