

The Flying Aces Silent Nocturnal Surveillance Ship

An Embryo Endurance

Designed expressly for aerial G-2 work, this bus sports some startling equipment to scour areas suspected of harboring Bad Guy Squadron bases! For silent operation Skoda mufflers have been fitted, as used by the Griffon on his famous "Black Bullet". Also, decibel damping end plates have been attached to the prop tips.

The observer, with a grand, unobstructed view from his front office, scans the darkened landscape with infrared binoculars developed by none other than Doc Savage! When something suspicious is sighted, the observer activates the large infrared beam and cameras (also developed by Clark Savage, Jr.) in the fuselage behind him to record his suspicions on film for scrutinization by G-2 experts later at headquarters. As most of you wingsters know, camouflage can seldom fool the eye of the camera.

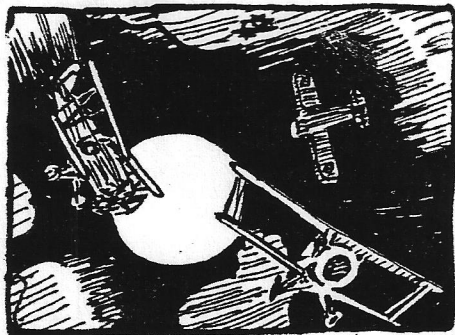
The special coloring of this clandestine craft will, along with its silence, prevent the enemy being aware of its presence. This would make their activities easier to detect, since no special caution would be used by them as would be if an airplane were known to be aloft.

Once their insidious installations have been pin pointed, the Flying Aces Belligerent Bomber will be dispatched with a full load of eggs of justice to eradicate the infamous infection.

One of these craft is under construction right now at Hangar #1, so heed this warning, Bad Guys. And if this were not already enough, the drawings for the F.A. Pugnacious Pursuit, and the F.A. Tractable trainer are near ready for future publication. The wrathful power of a complete Air Corps will be set upon you!!!!!!

SILENT NOCTURNAL SURVEILLANCE SHIP POST SCRIPT. Pg.10.

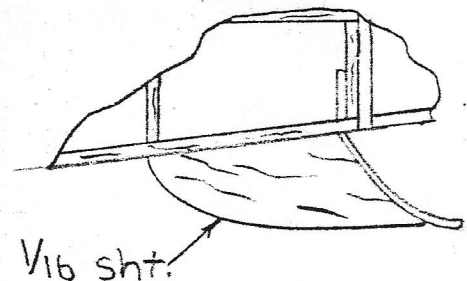
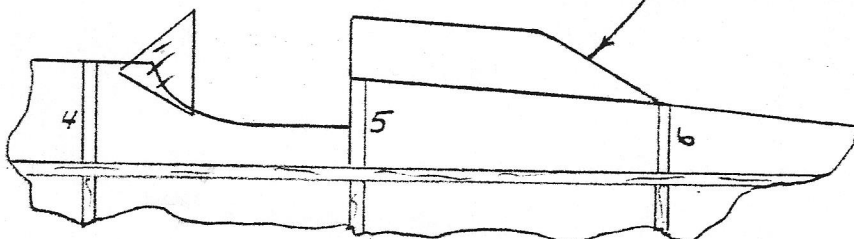
In the great haste to ready our G-2 Spy ship for ops against the Bad Guy bunch designers omitted the bonus point securing head rest from the drawing. Further, secret flight tests by G-2 pilots confirmed the need to eliminate the Decibel Dampers from the prop tips, and use a smaller prop carved from a 1/2 X 3/4 X 7 1/2 inch blank. Also an increase in fin area was felt warranted to keep her on a steady course while the infra red cameras clicked, so add the sub-rudder shown in the sketch below.

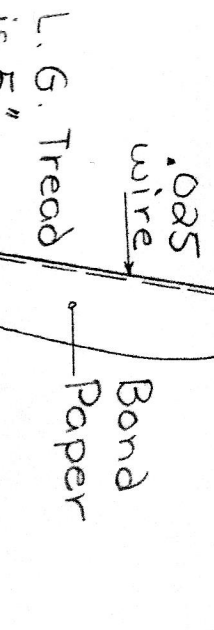
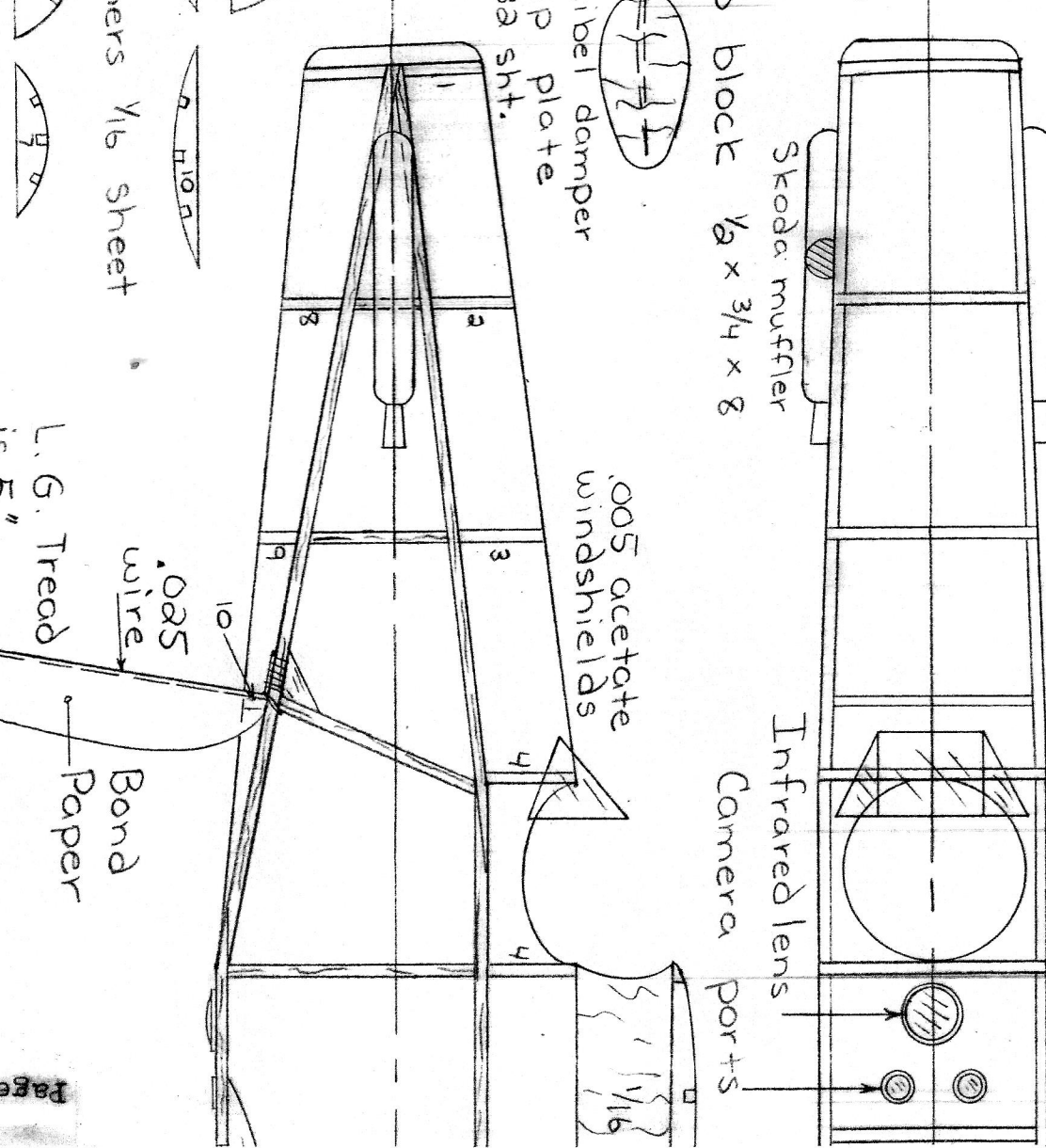
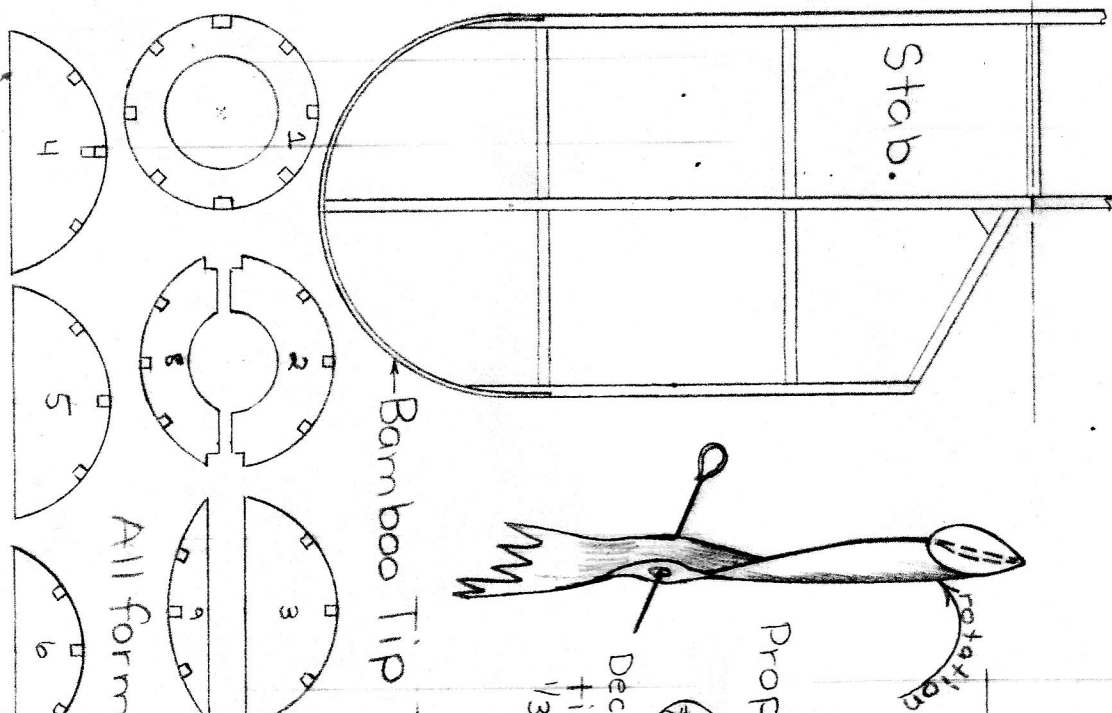


At the left is an infra red photo taken by our spy ship. It clearly shows Bad Guy Squadron bat flyers frantically searching the midnight sky for a sign of our Spy Plane.

Certain info has been released on the mysterious ship. Weight is just under 20 grams, and the muffled power plant is one loop of 4 mm Pirelli. Numerous flights in the two minute range have been made in a left-left pattern. How's yours?????

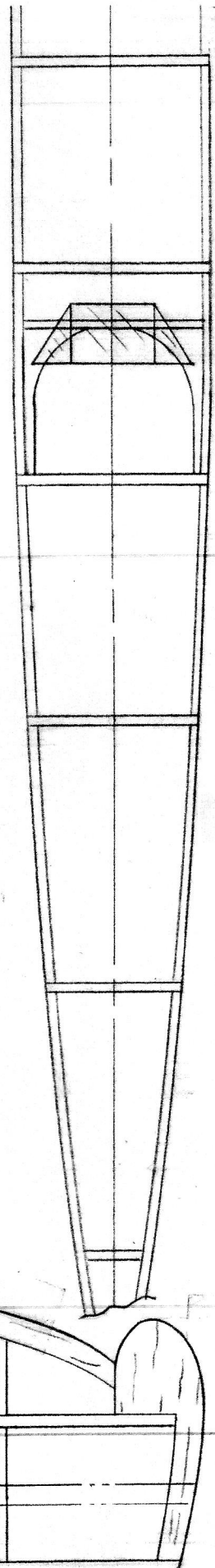
1/4 X 5/16 block





The Flying Aces
 Silent Nocturnal Surveillance Ship
 An Embryo Endurance Model

12-79
 lettered Chet
 by: Whiteley



1/6 sht. rib (23 required)

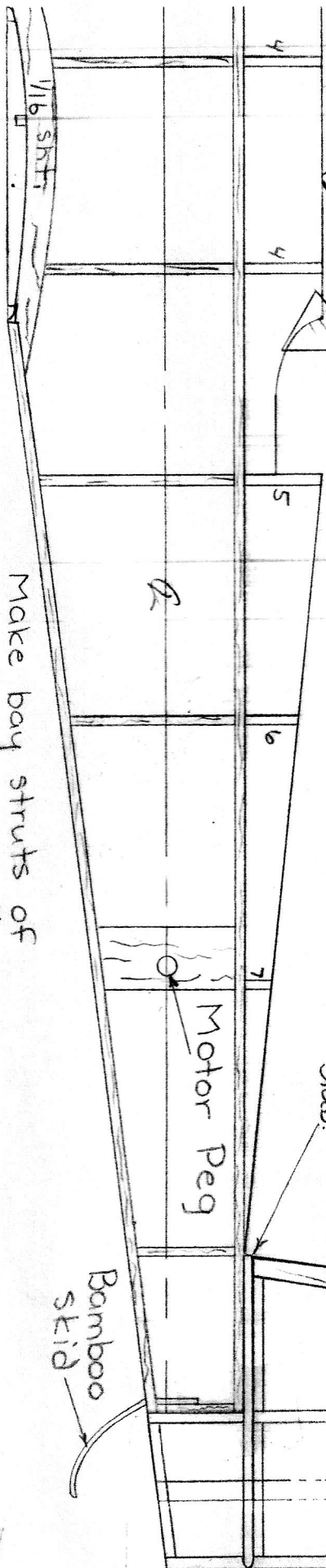
Color Scheme: Bottom surfaces
black -
all else green

1/6 x 1/8 center stringer under pylon

Stab.

Motor Peg

Bamboo skid



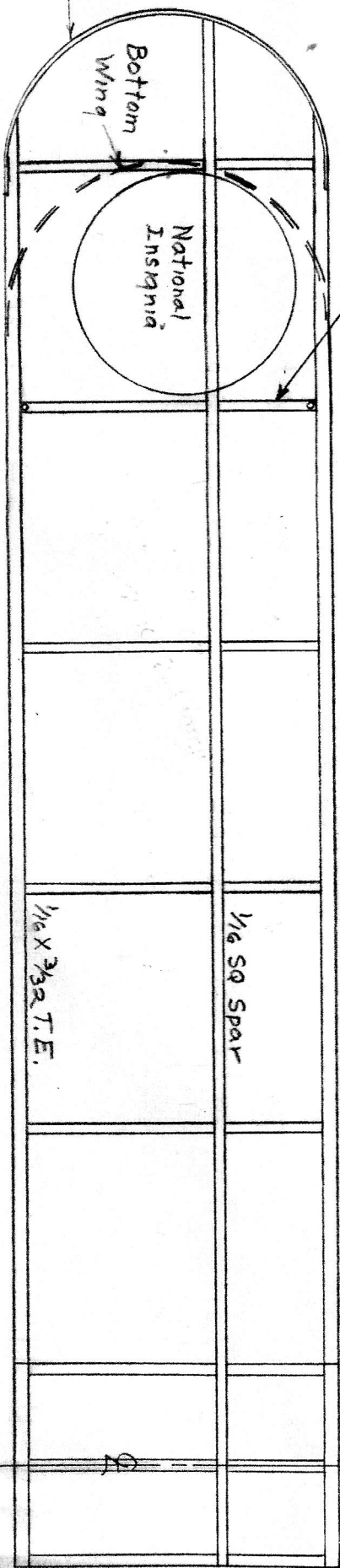
5/8 Dihedral under this rib - both wings

Make bay struts of bamboo - 3/32 x 3/64 x 2 1/2

1/6 x 3/32 L.F.

1/6 SQ Spar

1/6 x 3/32 T.E.



Bottom Wing

National Insipnia

Blue
WHT
Red