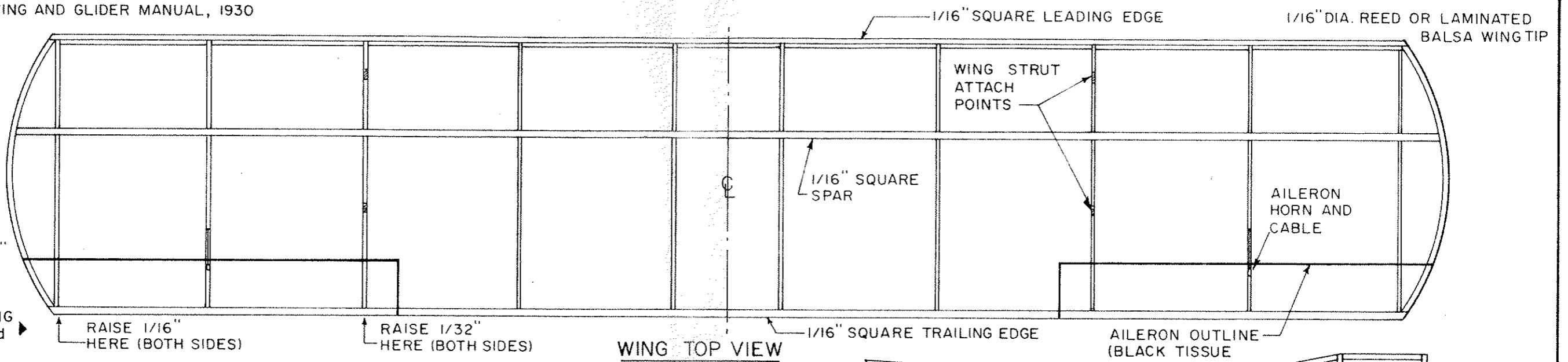


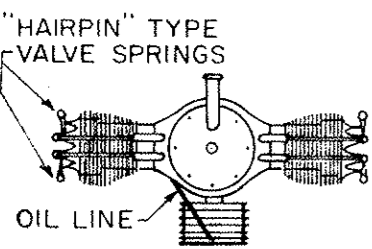
REFERENCE. FLYING AND GLIDER MANUAL, 1930

3/8" DIHEDRAL  
EACH TIP

IMPORTANT:  
BUILD "WASH-OUT"  
INTO WING BY  
RAISING BOTH  
TIP RIBS 1/16"  
AT THE TRAILING  
EDGES, AND 3rd  
RIBS 1/32".

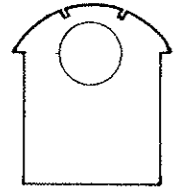


WING TOP VIEW



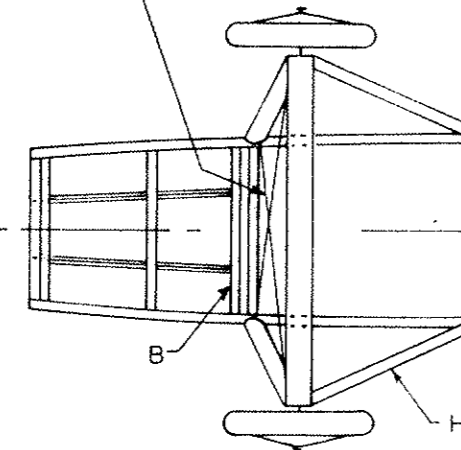
ENGINE  
FRONT VIEW

(SCRAP Balsa, THREAD,  
WIRE)



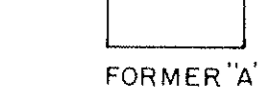
FORMER "A"

LANDING GEAR  
CROSS BRACING  
CABLE



FUSELAGE BOTTOM VIEW

NOTE: ALL WOOD IS Balsa UNLESS  
OTHERWISE STATED.  
ALL CABLES ARE SIMULATED  
WITH SILK THREAD.



FORMER "B"

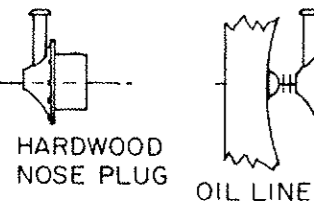
BAMBOO OR WIRE

COVER WITH  
STIFF PAPER

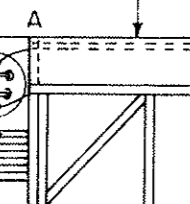
RIB (1/32" SHEET)

AILERON HORNS  
AND CABLES

ELEVATOR CONTROL  
CABLES



FOR R.O.G. FLIGHTS  
USE A 4" KAYSUN PROP OR  
A CUT-DOWN 5"  
FOR BEST PERFORMANCE  
(HAND LAUNCH) USE A 5"  
KAYSUN PROP.



RIGGING

SIDE VIEW

CABIN IS OPEN BETWEEN ARROWS "X"  
ON RIGHT HAND SIDE AND BETWEEN  
ARROWS "Y" ON LEFT HAND SIDE.  
NO WINDSHIELD WAS FITTED.

POWER: ONE LOOP OF 3/32" PIRELLI  
8" LONG (WITH 5" KAYSUN PROP).

PROTOTYPE MODEL REQUIRED  
CONSIDERABLE DOWNTHRUST,  
AND SLIGHT LEFT RUDDER.

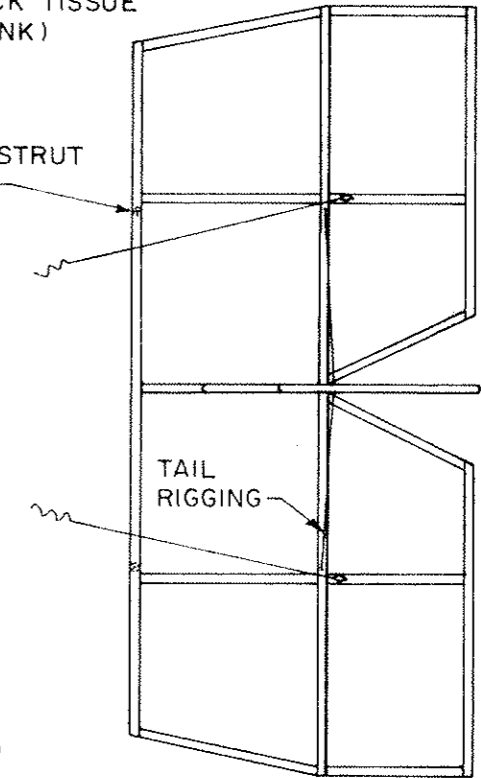
STABILIZER STRUT  
LOCATION

TAIL FRAMEWORK IS 3/64" SQUARE  
HARDWOOD DOWEL  
RUBBER MOTOR PEG

TAIL  
RIGGING

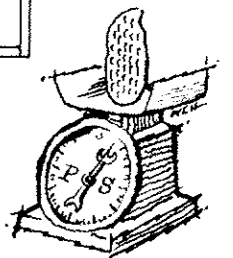
RUDDER CONTROL CABLE

STABILIZER BRACING STRUT



TOP VIEW  
TAILPLANES

ONE IN A SERIES OF MODEL AEROPLANE  
PLANS AND THINGS. AVAILABLE FROM  
W.C. HANNAN, GRAPHICS • P.O. BOX "A"  
ESCONDIDO, CALIFORNIA 92025 U.S.A.



## ALCO SPORTPLANE

1920 "HOMEBUILT"

28 H.P. LAWRENCE POWERPLANT

MODEL DESIGN: CPT. DAVE STOTT

FLYING ACES CLUB, BRIDGEPORT